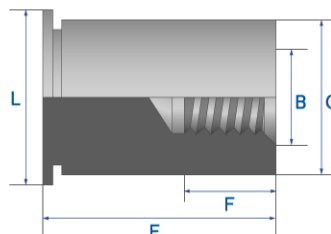


## Block Type Stand Off **YGBHFZ**



<b>Type / Platform Type</b>	Block Type / Hexa Platform
<b>Material</b>	Steel
<b>Finish</b>	Zinc Plate



\*Dimensions in millimeters

Part Number	Thread Size	C (-0.13)		Hole Size (+0.08)		Sheet Thickness min.		H across flat		B		Dist. C/L hole to edge min.	
YGBHFZ-025***	M2.5	4.19		4.20		>1.0		4.8		3.2		6.0	
YGBHFZ-030***	M3	5.39		5.40		>1.0		6.4		4.0		6.7	
YGBHFZ-035***	M3.5	5.39		5.40		>1.0		6.4		4.0		6.7	
YGBHFZ-040***	M4	7.14		7.20		>1.3		7.9		4.8		8.0	
YGBHFZ-050***	M5	7.14		7.20		>1.3		7.9		5.2		8.0	
<b>Spacer Lengths</b>		6	8	10	12	14	16	18	20	22	24	25	26
<b>F Min. depth full thread</b>		Max possible				6.4		9.5					